



THE DISCIPLINED INVESTOR PODCAST EPISODE 172

SUPPLEMENTAL MATERIALS

August 1, 2010

**1555 NorthPark Drive #102
Weston, Florida 33326**

www.horowitzandcompany.com

p 954-349-0800 f 954-349-1414

A financial table with multiple columns of stock data, including company names and numerical values.

Amer	10.42	+1.27	+8.2
SKOVIA	7.34	+1.13	+1.1
mer Express	5.91	+1.1	+1.9
Princ	1.06	+1.6	
Y	24.42		
Y	1.1		



Home News **Screener** Maps ^{NEW} Groups Portfolio Insider

My Presets

Order:

Ticker

Asc

Filters: 7

Descriptive(4)

P/E	Any	Forward P/E	Any	
Price/Cash	Any	Price/Free Cash Flow	Any	EPS this
EPS growth next 5 years	Over 10%	Sales growth past 5 years	Any	EPS qtr
Return on Equity	Any	Return on Investment	Any	Curr
Debt/Equity	Any	Gross Margin	Any	Operat
Insider Ownership	Any	Insider Transactions	Any	Instr Own

Overview

Valuation

Financial

Ownership

Performance

Technical

Total: 14 #1

No.	▲ Ticker	Company	Sector	
1	AMED	Amedisys Inc.	Healthcare	Ho
2	BKS	Barnes & Noble, Inc.	Services	Sp
3	CAAS	China Automotive Systems Inc.	Consumer Goods	Auto
4	CAB	Cabela's Inc.	Services	S

Basic Company Data

Data as of: July 22, 2010

Symbol LULU **LULULEMON ATHLETICA INC**
Description Lululemon Athletica Inc designs and retails athletic clothing. The Company produces fitness pants, shorts, tops and jackets for yoga, dance, running, and general fitness.

Sector Consumer Discretionary
Industry Consumer Durables & Apparel
Last Report Date 6/10/2010
Earnings Date 9/10/2010

HOROWITZ & COMPANY

H&C Composite Score



Fundamentals

Market Cap.	\$2.8 B	BETA	1.86
Price/Earnings	39.65	1Yr. EPS Growth Rate %	40.68%
Forward Price/Earnings	27.85	5Yr. Avg. EPS Growth Rate %	#N/A N/A
Price/Book	7.62	EPS Growth QoQ	107.69%
Forward PEG Ratio	1.16	Revenue Growth QoQ	41.52%
Return on Equity	30.05	Dividend Yield	0.00%
LT Debt/Equity	0.00%	Cash Flow Per Share	1.68

Technicals

Price	\$39.65	MACD	Oversold, BUY
50-Day MA	\$39.92	Stochastics	Trend Up
200-Day MA	\$33.54	RSI Signal	Trend Up
50/200 Day MA	\$6.38	S/T Trender	Down
Volume Pressure	0.81	L/T Trender	Down
Average Daily Volume	1,845,870		

H&C Fundamental Score

3.9

H&C Technical Score

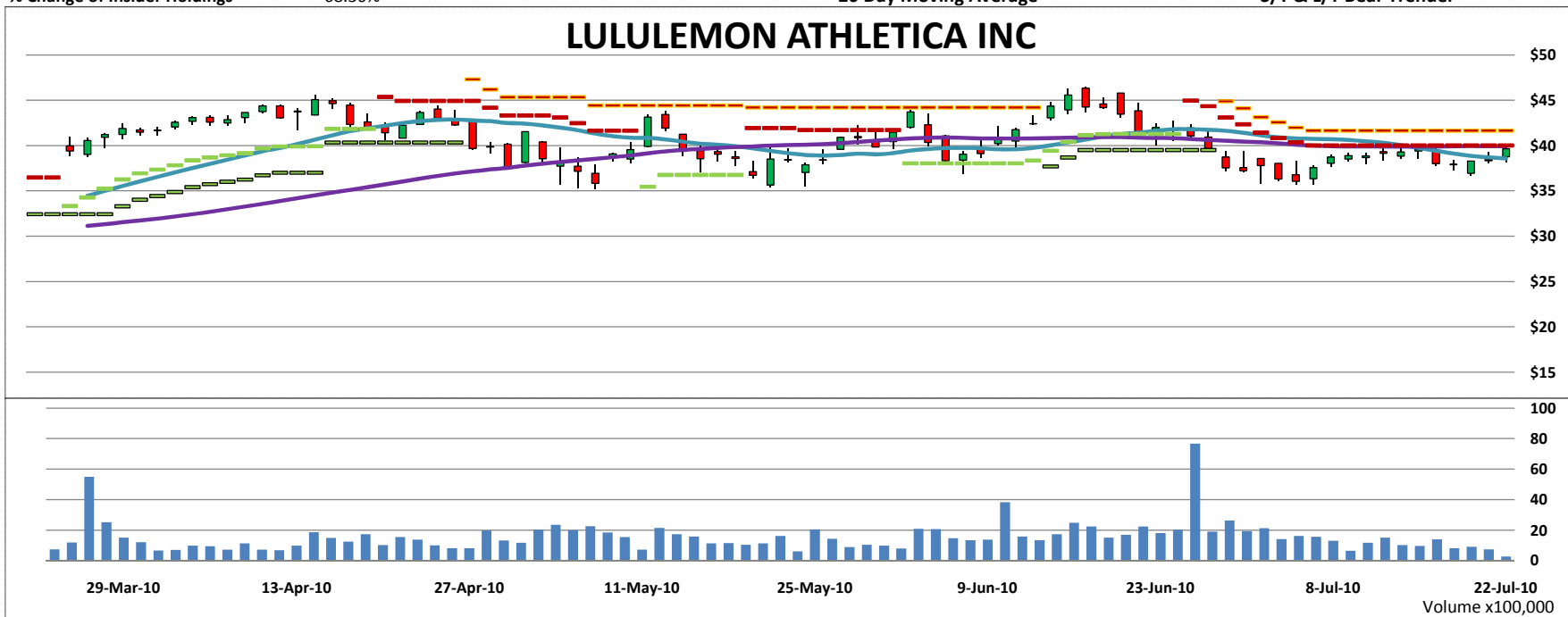
2.2

Management

Inst. Buy/Sell Ratio	1.85	Management Ownership	0.64%
% Change of Insider Holdings	68.36%		

50 Day Moving Average
 20 Day Moving Average

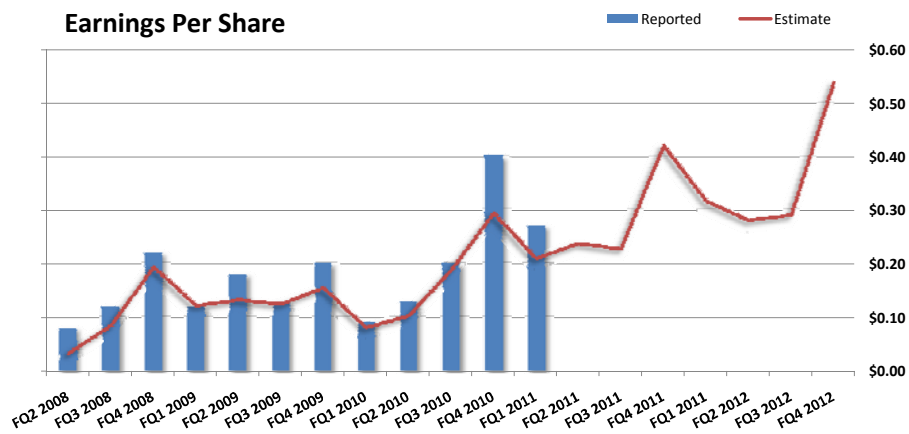
S/T & L/T Bull Trender
 S/T & L/T Bear Trender



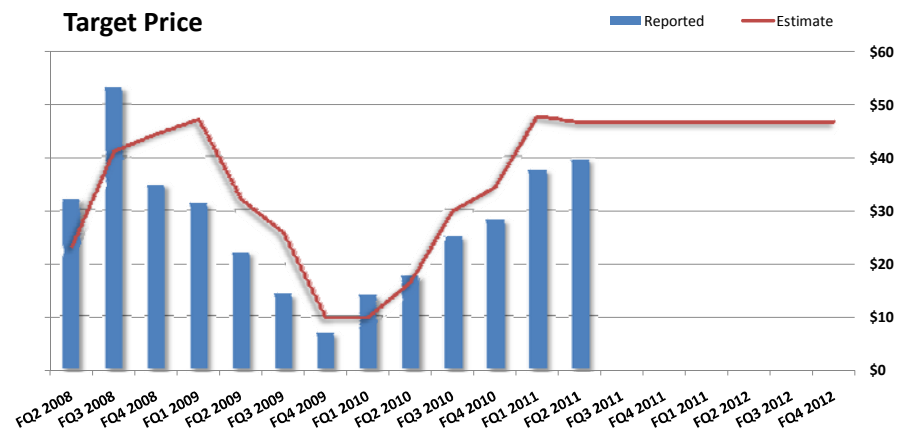
Fundamentals

LULULEMON ATHLETICA INC

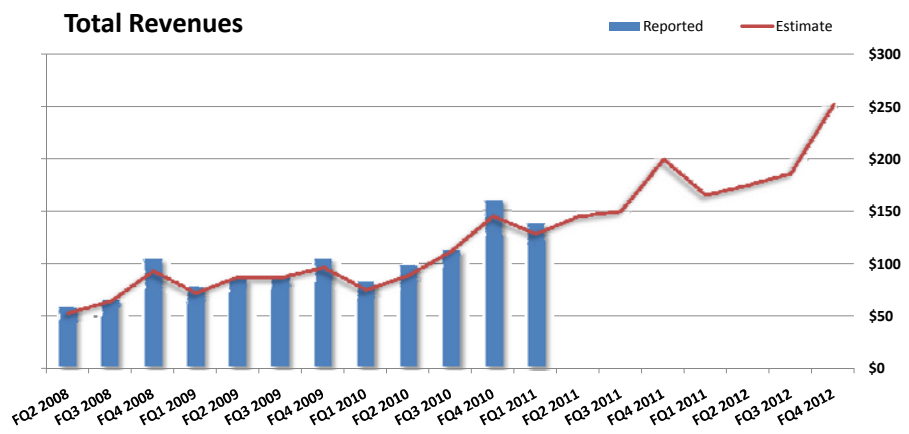
Earnings Per Share



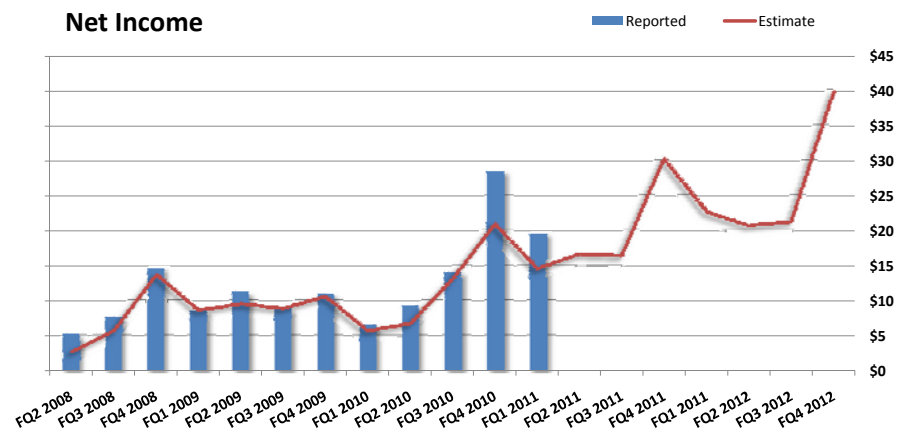
Target Price



Total Revenues



Net Income



Geographic Segmentation of Revenue

Yearly

Segment Name	FY 2010	FY 2009	FY 2008	FY 2007	FY 2006
Canada	\$271.17	\$243.53	\$218.36	\$129.71	\$76.98
United States	\$181.14	\$109.84	\$53.24	\$17.36	\$6.47
Asia Pacific	\$0.59	\$0.12	\$3.12	\$1.81	\$0.68

Product Segmentation of Revenue

Yearly

Segment Name	FY 2010	FY 2009	FY 2008	FY 2007	FY 2006
Corporate-owned stores	\$393.45	\$315.55	\$243.56	\$120.73	\$65.58
Other - wholesale	\$44.89	\$21.74	\$13.01	\$6.79	\$4.00
Franchises	\$14.55	\$16.20	\$18.14	\$21.36	\$14.56

Basic Company Data

Data as of: July 22, 2010

Symbol NTRI **NUTRISYSTEM INC**

Description NutriSystem, Inc. operates an online weight loss community. The Company's Web site provides members with a weight management program that incorporates personal online counseling, individual diet and exercise plans, as well as other information. NutriSystem also markets the NutriSystem Sweet Success brand of diet meal replacement products through retail outlets.

Sector Consumer Discretionary

Industry Retailing

Last Report Date 5/3/2010

Earnings Date 7/29/2010

Fundamentals

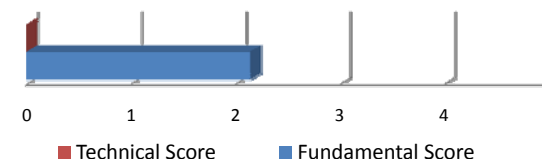
Market Cap.	\$726.4 M	BETA	0.90
Price/Earnings	23.62	1Yr. EPS Growth Rate %	-36.49%
Forward Price/Earnings	17.56	5Yr. Avg. EPS Growth Rate %	81.07%
Price/Book	5.33	EPS Growth QoQ	-55.56%
Forward PEG Ratio	1.20	Revenue Growth QoQ	20.50%
Return on Equity	23.52	Dividend Yield	3.02%
LT Debt/Equity	0.00%	Cash Flow Per Share	1.95

HOROWITZ & COMPANY

H&C Composite Score

2.1

Neutral



Technicals

Price	\$23.15	MACD	Overbought, SELL
50-Day MA	\$22.59	Stochastics	Trend Down
200-Day MA	\$22.10	RSI Signal	Trend Down
50/200 Day MA	\$0.49	S/T Trender	Up
Volume Pressure	1.26	L/T Trender	Up
Average Daily Volume	506,168		

H&C Fundamental Score

2.1

H&C Technical Score

0.0

Management

Inst. Buy/Sell Ratio	0.76	Management Ownership	8.78%
% Change of Insider Holdings	9.52%		

50 Day Moving Average
20 Day Moving Average

S/T & L/T Bull Trender
S/T & L/T Bear Trender

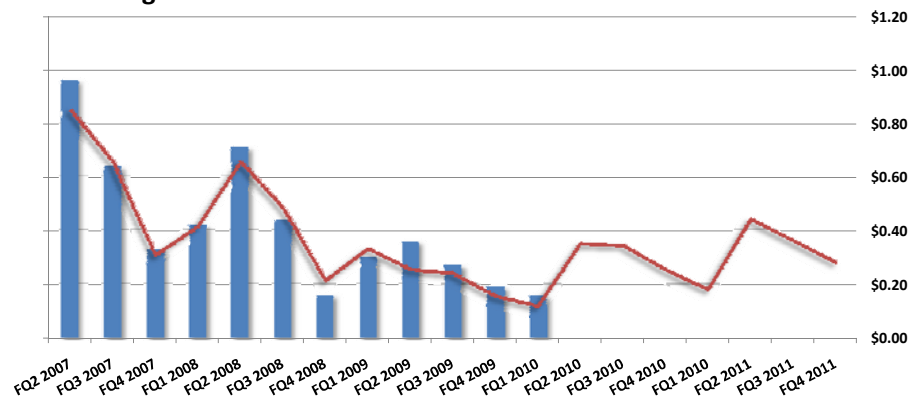


Fundamentals

NUTRISYSTEM INC

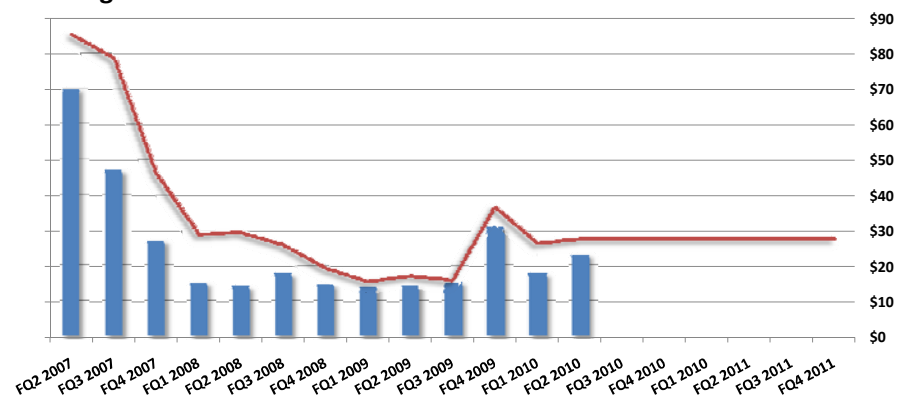
Earnings Per Share

Reported Estimate



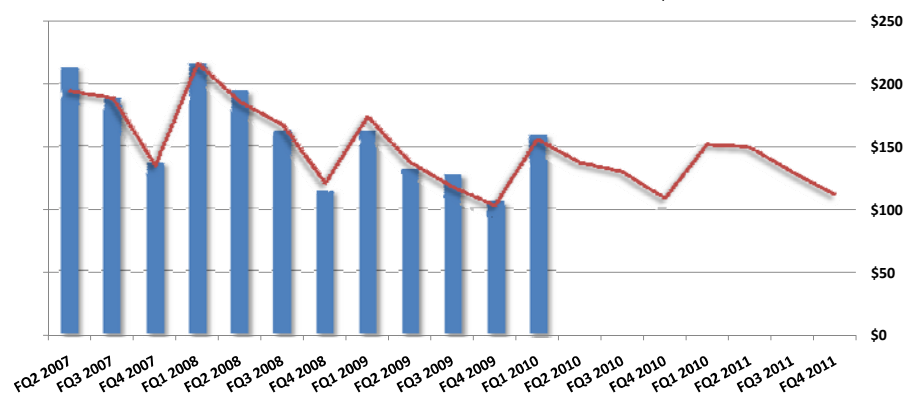
Target Price

Reported Estimate



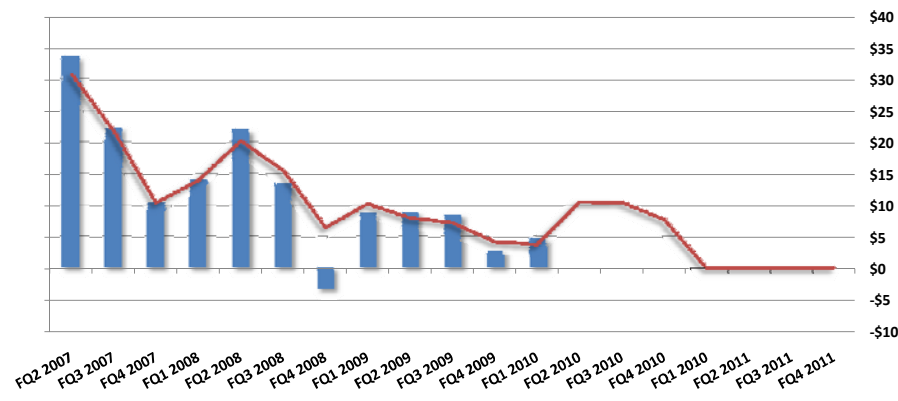
Total Revenues

Reported Estimate



Net Income

Reported Estimate



Geographic Segmentation of Revenue

Quarterly

Segment Name	FQ1 2010	FQ4 2009	FQ3 2009	FQ2 2009	FQ1 2009
United States	\$158.83	\$106.20	\$127.03	\$131.81	\$161.78

Product Segmentation of Revenue

Quarterly

Segment Name	FQ1 2010	FQ4 2009	FQ3 2009	FQ2 2009	FQ1 2009
Weight Management Systems	\$158.83	\$106.20	\$127.03	\$131.81	\$161.78



**1555 NorthPark Drive #102
Weston, Florida 33325
p 954-349-0800 f 954-349-1414**

Notice and Disclaimer

This material is provided for information only and is not intended as a recommendation or an offer or solicitation for the purchase or sale of any security or financial instrument. This material is not a complete analysis of all material facts respecting any issuer, industry or security or of your investment objectives, parameters, needs or financial situation, and therefore is not a sufficient basis alone on which to base an investment decision. Horowitz & Company and its affiliates may have positions (long or short), effect transactions or make markets in securities or financial instruments mentioned herein (or options with respect thereto), or provide advice or loans to, or participate in the underwriting or restructuring of the obligations of, issuers mentioned herein. Moreover, a Horowitz & Company trading desk may have acted on the basis of this material. The information contained herein is as of the date and time referenced above and Horowitz & Company does not undertake any obligation to update such information. All market prices, data and other information are not warranted as to completeness or accuracy and are subject to change without notice. Past performance is not indicative of future results. The investments discussed may fluctuate in price or value. Changes in rates of exchange may have an adverse effect on the value of investments. Transactions involving financial instruments mentioned herein may not be suitable for all investors.

