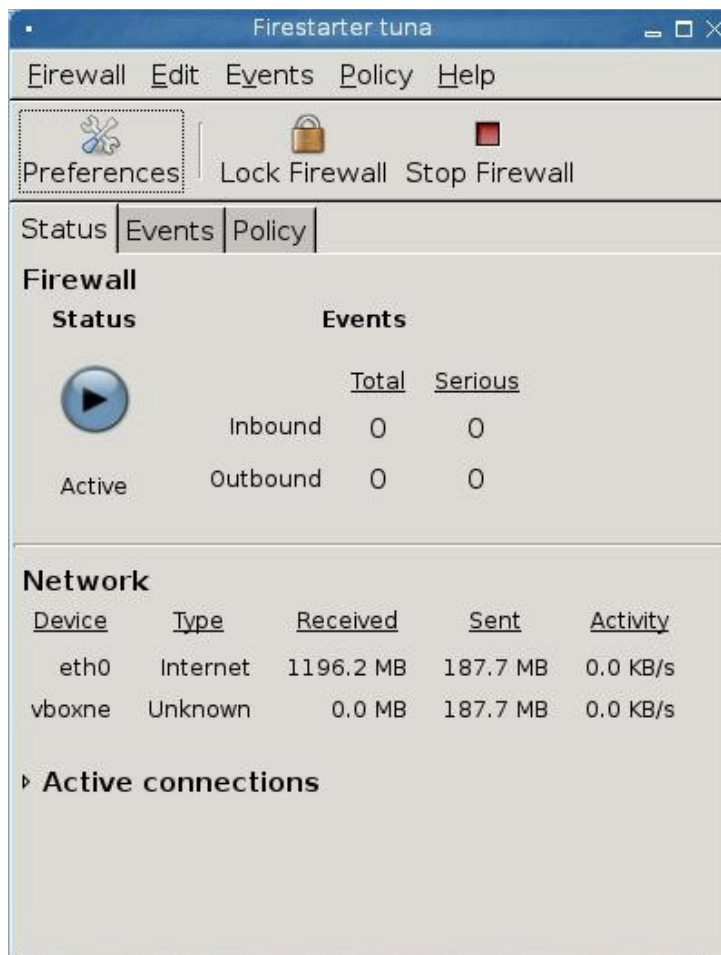


# Firestarter Firewall

A Presentation for TWUUG

Frank W. Bell, Jr.

January 6, 2011

**Highlights:**

Graphical Interface  
Easy Installation and Configuration  
Runs in Background  
Requires root privileges

**Availability:**

\*.rpm  
\*.deb  
Sources

Requires Gnome libraries.

**Firestarter Website:** <http://www.fs-security.com/>

First Run Wizard performs basic configuration:



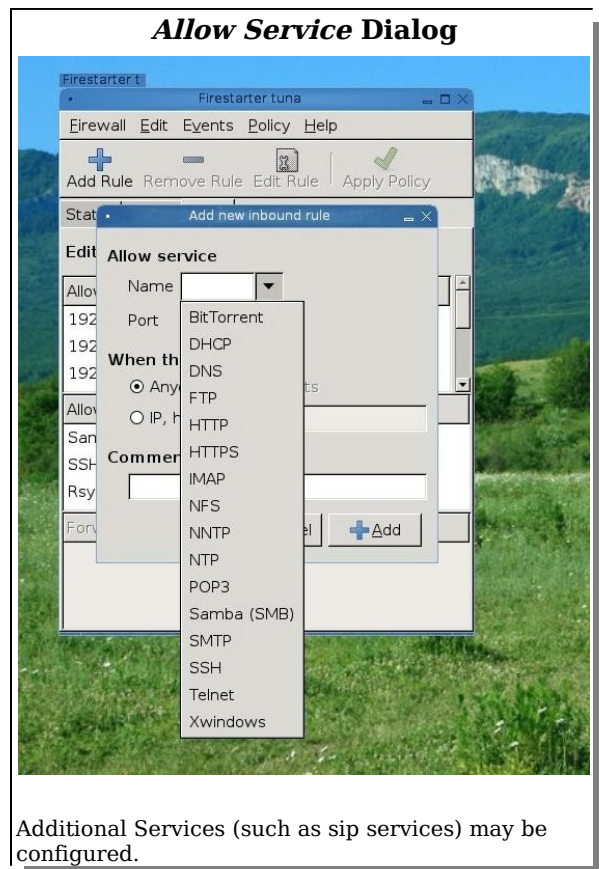
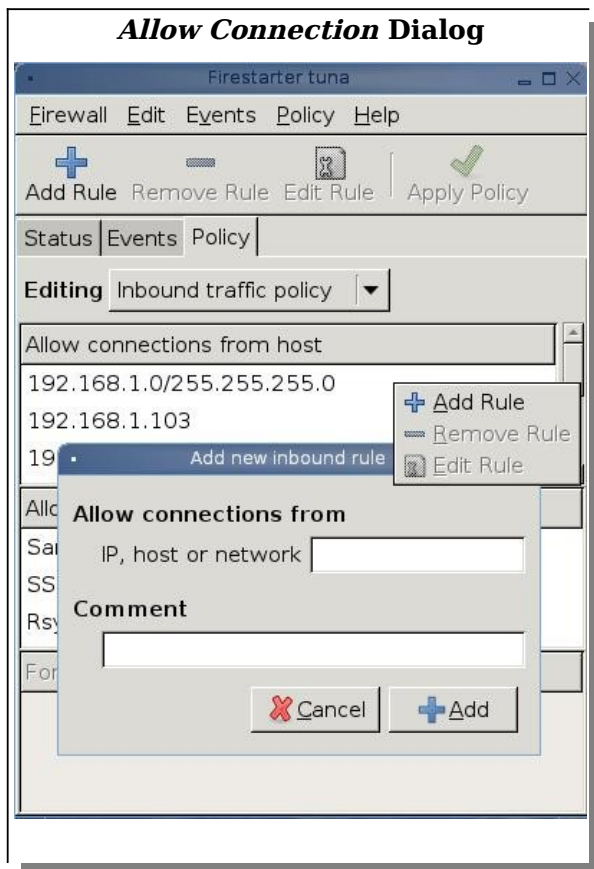
Wizard may also be invoked from the "File" menu.

Menu Item	Selections (Context Sensitive)
<b>File</b>	Run Wizard, Start Firewall, Stop Firewall, Lock Firewall, Quit
<b>Edit</b>	Copy Description, Preferences
<b>Events</b>	Clear, Reload, Save List, Show Column
<b>Policy</b>	Add Rule, Remove Rule, Edit Rule, Apply Policy
<b>Help</b>	Online Users Manual, Firestarter Homepage, About

### Setting Policy

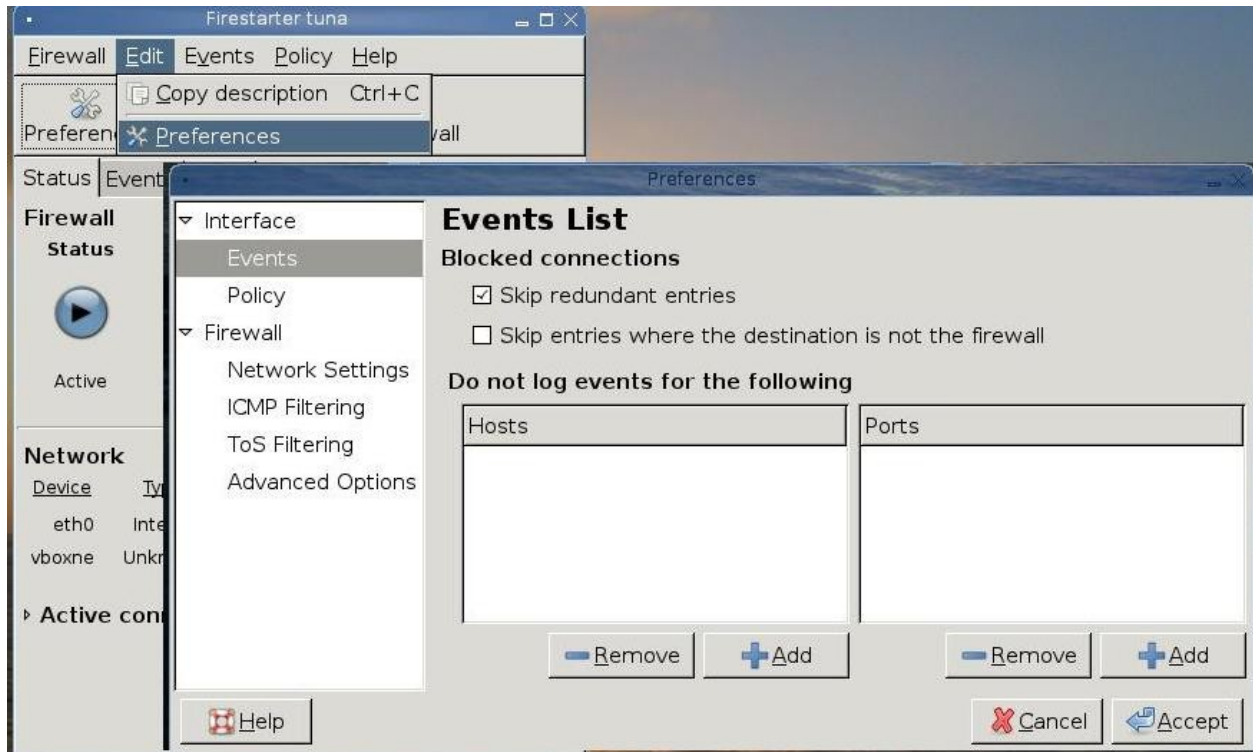
**Outbound:** Default outbound policy is “Permissive by Default,” requiring a blacklist to restrict traffic. This may be changed to “Restrictive by Default,” requiring a whitelist to allow traffic.

**Inbound:**



Additional Services (such as sip services) may be configured.

## Preferences Dialog



<b>Edit--&gt;Preferences Configuration Items</b>		
<b>Heading</b>	<b>Subheading</b>	<b>Configuration Items</b>
<b>Interface</b>	----->	Enable Tray Icon Minimize to tray on Window Close
	Events	Skip redundant entries Skip entries where the destination is not the firewall Do not log events for the following: Hosts ( <i>dialog</i> ) Ports ( <i>dialog</i> )
	Policy	Apply policy changes immediately
<b>Firewall</b>	----->	Start/restart firewall on program start up Start/restart firewall on dial-out Start/restart firewall on DHCP lease renewal
	Network Settings	Internet connected device Detected device(s) ( <i>drop down selection box</i> ) Local network connected device Detected device(s) ( <i>drop down selection box</i> ) Enable internet connection sharing Enable DHCP for the local network DHCP server details ( <i>configuration dialog</i> )
	ICMP Filtering	Enable ICMP Filtering Allow the following ICMP packet types ( <i>list with checkboxes</i> )
	ToS Filtering	Enable Type of Service filtering Prioritize services commonly used by Workstations Servers The X Window System Prioritize by maximizing the Throughput Reliability Interactivity
	Advanced Options	Preferred packet rejection method Reject with error packet Drop silently Broadcast traffic Drop broadcasts from external network Drop broadcasts from internal network Traffic validation Block traffic from reserved addresses on public interfaces

**Notes:**

ICMP=Internet Control Message Protocol  
ToS:=Type of Service

Files:

